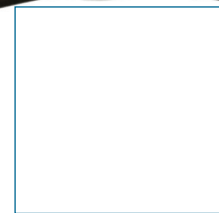


Customer Support, Calibration, Maintenance and Service



LTH Electronics Limited are based in Luton, England and have been designing, manufacturing, marketing and servicing process instrumentation and sensors since 1967.

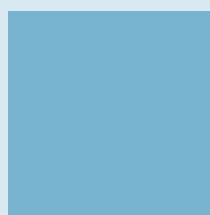
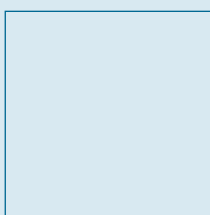
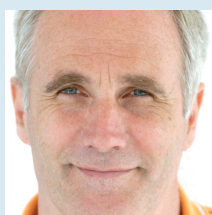
With a high standard of sales, customer service, manufacturing and administration staff combined with innovative design, modern production techniques and over 40 years experience LTH understand the applications and specifications that process instrumentation and sensors need to meet. We aim to provide customers with the exact equipment they need, within their required timescales and budgets backed up with outstanding customer service.

The staff of LTH Electronics pride themselves on the quality of the products they manufacture and the support they offer to all of their customers. We are continually striving to improve the service we offer to every customer, including field service, technical support at the end of the phone and repairs for complete peace of mind and cost control. Our products are marketed and supported globally through our network of LTH trained distributors. Our website www.lth.co.uk provides easily accessible up to date technical information, application notes and product manuals.

LTH are an ISO9001: 2000 registered company who offer a range of Contacting and Electrodeless Conductivity, pH, Redox, Dissolved Oxygen, Suspended Solids, Turbidity, Level & Flow instrumentation and sensors to suit most process applications.

With a 3 year warranty on all our instrumentation and a comprehensive and dependable after sales service including installation, commissioning, planned maintenance, calibration to traceable standards and product training we aim to meet and exceed all of our customers expectations.

LTH Electronics can commission any new instrumentation and sensors reducing the start up time saving the customer money and resources. The installation is checked and assessed to ensure the instrumentation and sensors are configured for optimum process operation and performance. A report is provided detailing the instrument configuration, the commissioning work carried out and any future recommendations to improve the process operation.



“We are continually striving to improve the service we offer to every customer.”

The importance of accurate control and reliable measurement of manufacturing processes without any interruptions or expensive downtime means it is not always possible for companies to send away equipment for servicing and calibration. LTH can provide an on site certified calibration service traceable to National standards.

We also offer a tailored comprehensive maintenance package at competitive prices to suit individual customer requirements. When taking out an LTH Planned maintenance agreement customers enjoy discounted prices for spare parts and labour rates as well as reducing unscheduled production downtime.

- **A flexible maintenance program, customised to meet customer requirements, through a schedule of planned visits at times to suit you the customer.**
- **Systems are kept operating to optimum performance and full compliance as they were originally designed to, maintaining plant efficiency.**
- **Calibration to traceable standards for all LTH measurement systems of and other manufacturers.**
- **Learn how to operate and maintain your equipment efficiently and effectively.**

The LTH Electronics team of qualified and experienced service engineers will ensure that your measurement system is functioning and operating as it was originally designed.

A schedule for a planned visit on a single control loop includes the following comprehensive tests:

- **A fully traceable simulator is connected in place of the sensor/probe to check instrument calibration and ensure the correct operation of all control, dosing and alarm functions.**
- **Re-calibration and certification traceable to National standards is carried out if required.**
- **Instrument configuration is checked to ensure optimum operation.**
- **Wiring at instrument and junction boxes are checked for correct termination, security and to ensure connections are free from corrosion.**

- **Sensor/probes are removed for cleaning & inspection and then calibrated to their respective instrument.**
- **The complete system is put back on-line and readings are checked against a certified hand portable to make sure they correspond.**
- **A Service/calibrated label is attached to the instrument with date of visit, by whom and the due date for the next visit. A documented report is completed for the work. Certification traceable to National standards is provided in electronic format.**

Each control loop gets a comprehensive operational test; if problems are encountered on site our technicians hold extensive stocks so that operational problems can be speedily and efficiently resolved. Leading Blue Chip Companies have already opted for our Planned Maintenance Program, providing them with traceable certification and peace of mind.

Finally we offer technical training at competitive rates on your LTH Electronics instrumentation. This can include general operation, Calibration, Routine Maintenance and troubleshooting. The training can be carried out either onsite at the customers premises or at our factory in Luton ensuring your staff have hands on knowledge on how to operate and maintain the equipment.

If on site calibration and service of the instrumentation and sensors is not practical the instrumentation and sensors can returned to LTH Electronics where it will be dealt with quickly and efficiently ensuring as little disruption as possible. Our test and service engineers can inspect, service, repair and calibrate the equipment to match your requirements.

**Whatever your service and calibration needs contact our sales support team on
(+44) 01582 593693
or by e-mail to sales@lth.co.uk.**



These products comply with current European Directives

LTH Electronics Ltd reserves the right to make changes to this data sheet or the product without notice, as part of our policy of continued developments and improvements. All care has been taken to ensure the accuracy of information contained in this data sheet. However we cannot accept responsibility for any errors or damages resulting from errors or inaccuracies of information contained herein.

Issue: 0208

