

KLAY-INSTRUMENTS B.V.

INSTRUCTION MANUAL

PRESSURE AND LEVEL TRANSMITTERS

*** WARNING ***

Read this manual before working with the product. For personal and system safety, and for optimum product performance, make sure you thoroughly understand the contents before installing, using, or maintaining the SERIES 8000 or SERIES 8000-SAN.

SERIES 8000-SAN



SERIES 8000



Made by:

 **KLAY INSTRUMENTS B.V.**

Nijverheidsweg 57991 CZ Dwingeloo
P.O. Box 13 7990 AA Dwingeloo

The Netherlands

TEL: +31 521-591550
FAX: +31 521-592046

CONTENTS

SECTION	PAGE	SECTION	PAGE		
1	Introduction	2/6	4	Wiring	5/6
1.1	Description Series 8000-SAN	2/6	4.1	Digital Local Indicator	5/6
1.2	Description Series 8000	2/6	4.2	Hazardous area (Exi)	5/6
1.3	Barometric reference	2/6	4.3	Traceability year of manufacturing	5/6
			4.4	CE-rules	5/6
2	Dimensional Drawing	3/6	4.5	External Load	5/6
2.1	Dimensional Drawing 8000-SAN	3/6			
2.2	Dimensional Drawing 8000	3/6	5	Precautions and Warnings	6/6
2.3	Installing Weld-on nipple	3/6			
3	Installing Transmitter	4/6			
3.1	Installing Transmitter 8000-SAN	4/6			
3.2	Installing Transmitter 8000	4/6			
3.3	Mounting Position	4/6			
3.4	Mounting Position Effect	4/6			
3.5	Calibration	4/6			

1 INTRODUCTION:

The SERIES 8000 and SERIES 8000-SAN are solid state pressure- and level transmitters based upon a piezoresistive monocrystalline silicon sensor, with a very high burst pressure.

The sensor element is mounted in a stainless steel foot. A very strong stainless steel "flush" diaphragm protects the sensor from the process medium. Silicone oil fills the chamber surrounding the sensor and transfers pressure from the flush mounted diaphragm to the sensor.

Pressure exerted on the sensor element creates a very small deflection of the silicon substrate and bridge network. The resulting strain in the silicon resistors causes a change in the bridge resistance that is proportional to the pressure applied. The transmitter electronics detects this change in bridge resistance and converts it into 4-20 mA. The amplifier system is based on a single Integrated Circuit, which ensures a perfect linearity in the 4-20 mA output. The electronics are fully encapsulated and are therefore unaffected by vibrations and moisture.

1.1 DESCRIPTION SERIES 8000-SAN:

The SERIES 8000-SAN are specially designed to be non-clogging and capable of being cleaned inside, therefore they have a flush mounted diaphragm so they fully meet the needs of the food, chemical and pharmaceutical industries. Standard the wetted parts are made of SS 316 (AISI), a lot of other materials are available. Various processconnections can be delivered, such as Tri-Clamp, SMS, dairy milkcouplings, flanges and very sanitary weld-on nipples \varnothing 62 and 85 mm.

1.2 DESCRIPTION SERIES 8000:

The SERIES 8000 is specially designed for the pulp- and paper industry or similar, where clogging is a problem. The very compact construction of the SERIES 8000 permits flush installation with the tank- or pipewall. Standard the wetted parts are made of SS 316 (AISI), a lot of other materials are available.

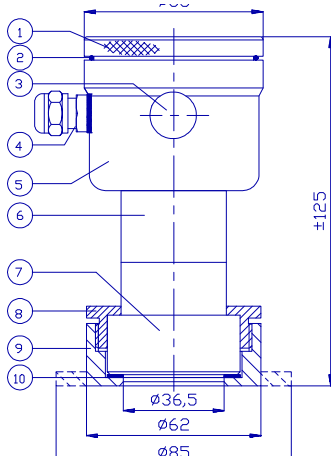
The SERIES 8000 and SERIES 8000-SAN are fully temperature compensated, which means that various process-temperatures have nearly no effect on the accuracy of the output signal. When a failure occurs, the transmitter is repairable. We keep record of all resistors that are used in a certain combination, so that it's possible to change the sensor and diaphragm as one part, or the electronic circuit board. However, for optimum accuracy the transmitter has to be send back to the factory.

1.3 BAROMETRIC REFERENCE:

The SERIES 8000-SAN is in basic a so called "relative transmitter" which means that barometric changes will not affect the zero (4 mA). The venting hole (3) is placed at the side of the electronic housing and is the barometric reference to atmospheric. The venting hole must be kept clean.

2.1 DIMENSIONAL DRAWING 8000-SAN: PARTS DESCRIPTION:

MATERIAL:

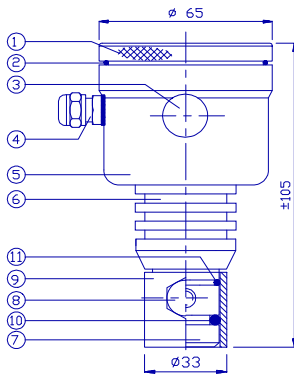


- | | |
|-----------------------|----------|
| 1. Cover | SS 304 |
| 2. O-ring | EPDM |
| 3. Venting | |
| 4. PG9 Cable Gland | |
| 5. Electronic Housing | SS 304 |
| 6. Foot | SS 304 |
| 7. Diaphragm and ring | SS 316 |
| 8. Lockring | SS 304 |
| 9. Weld-on nipple | SS 316 L |
| 10. Packing | PTFE |

2.2 DIMENSIONAL DRAWING 8000:

PARTS DESCRIPTION:

MATERIAL:

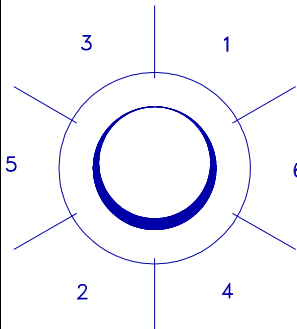


- | | |
|-----------------------|----------|
| 1. Cover | SS 304 |
| 2. O-ring | EPDM |
| 3. Venting | |
| 4. PG9 Cable Gland | |
| 5. Electronic Housing | SS 304 |
| 6. Cooling fins | SS 304 |
| 7. Diaphragm and ring | SS 316 |
| 8. M8 Bolt | SS 304 |
| 9. Weld-on nipple | SS 316 L |
| 10. O-ring | VITON |
| 11. O-ring | VITON |

2.3 INSTALLING WELD-ON NIPPLE:

Installation of the weld-on nipple should be performed by a skilled machinist or welder. Weld Argon, MIG or TIG with the smallest welding pin.

- Cut a hole in the process vessel/pipe to accept the weld-on nipple. The hole should produce a tight fit when coupled with the weld-on nipple.
- Prepare the vessel hole by beveling the edge to accept filler material.
- Remove the weld-on nipple from the transmitter.
- Remove the PTFE packing of the SERIES 8000-SAN.



WARNING:

Improper installation may result in distortion of the weld-on nipple. Excessive heat will distort the weld-on nipple. Weld in sections as shown in the figure left. Allow adequate cooling between passes. To reduce the chances of distortion to the weld-on nipple, use a mandrell.

(SERIES 8000-SAN Part.nr. 1019)
(SERIES 8000 Part.nr. 1016)

The position of the electronic housing (SERIES 8000) is fixed by the welding position of the weld-on nipple. Before welding, locate weld-on nipple so that the cable entry and the venting are in the right direction.

- Position the weld-on nipple in the vessel hole and tack six places. The weld sequence is shown in the figure above.
- Weld the weld-on nipple in place using 0,03 to 0,045 in. (0,762 to 1,143 mm) stainless rod as filler material in the bevelled area. Adjust amperage for penetration.
- Remove mandrel after the welding operation.

3 INSTALLING TRANSMITTER:

The diaphragm of the transmitter is protected with a special protection cap. Protect the diaphragm until installation takes place. **DO NOT DAMAGE THE DIAPHRAGM.**

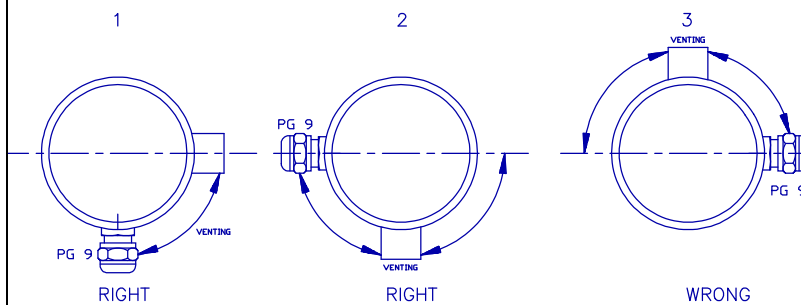
3.1 INSTALLING TRANSMITTER SERIES 8000-SAN:

1. Improper installation at the packing can cause a process leak.
2. Make sure to correctly locate the packing within the weld-on nipple.
3. Position the transmitter into the weld-on nipple and begin engaging threads. The transmitter can be rotated prior to seating enabling the user to optimize access to calibration adjustments, cable entry, and local indicator.
4. Once Lockring (8) has been hand tightened, snug an additional turn with adjustable pliers (1/8").

3.2 INSTALLING TRANSMITTER SERIES 8000:

1. After welding, clean up edges, take care of the inside nipple wall.
2. Make sure the O-rings (10) and (11) are properly located. Improper installation at the O-ring can cause a process leak.
3. Apply silicone grease to the O-ring(10), diaphragm ring and the hole inside wall of the weld-on nipple, this prevents galvanic cell corrosion between transmitter and nipple inside.
4. Install the transmitter and fix it with the SS M8 bolt.

3.3 MOUNTING POSITION:



When the transmitter is mounted horizontal, the venting **MUST** be pointed horizontal to downwards. See figure left.

1 = Right (= Preferred Position)
2 = Right

All other mounting positions are **NOT** allowed (3 = Wrong).

3.4 MOUNTING POSITION EFFECT:

The transmitters are calibrated in horizontal position.

If the transmitter is mounted vertical (up or down), there will be a zero shift.

If the transmitter is mounted up there is a zero shift (< 4mA). If the transmitter is mounted down there is a zero shift (> 4mA).

After installation of the transmitter the zero must be set at 4 mA with the zero potentiometer.

DO NOT change the span.

3.5 CALIBRATION:

All transmitters are fully calibrated at the factory, to the conditions stipulated in users order. When the buyer has not requested calibration, the transmitter will be calibrated at the lowest span.

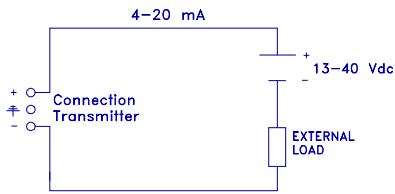
It may be advisable to recalibrate the transmitter after shipment.

For wiring connection see next page.

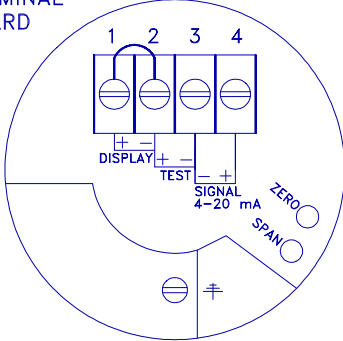
The calibration sequence is as follows:

1. The output of the transmitter must be set at 4 mA (Zero-potentiometer).
2. Airpressure in accordance with the process pressure must be put on the testnipple.
3. The output of the transmitter must be set at 20 mA (Span-potentiometer).
4. Remove the airpressure.
5. Check if the output of the transmitter is 4 mA. (Otherwise repeat steps 1 till 4)
6. Install transmitter (See above).
7. The output must be set at 4 mA (dependable of mounting position).

4 **WIRING:**



TERMINAL BOARD



The connector, and **zero / span** potentiometers are under the cover. Testnipples for calibration of the SERIES 8000 and SERIES 8000-SAN are available on request.

In most circumstances the load should be placed in the negative leg of the 2-wire loop, although it is not necessary.

The figure left shows the wiring connection of the transmitter. The 2-wires must be connected to connectors 3 (-) and 4 (+) of the terminal board.

The signal wiring must be shielded and twisted pair yield the best results. **DO NOT** run signal wiring in open trays with power wiring, or near "heavy" electrical equipment (E.g. Frequency controllers or heavy pumps).

Shielding must always be connected at the side of the power supply.

The transmitter ground (internal or external) must **NOT** be grounded when the mounting position is already grounded.

This is extremely important to prevent an "earth loop".

Care must be taken to assure that the polarity of the power supply is correct, a reversal of wiring polarity will not damage the transmitter, but it will not function until the wiring is connected correctly.

4.1 **DIGITAL LOCAL INDICATOR:**

The local indicator displays a digital value that is proportional to the pressure measured by the transmitter. The full scale point may be set to any value between 0000 and 1999. The local indicator can be mounted afterwards. Remove the bridge which is placed between connector (1) and (2). Connect the red (+) wire to (1) and the black (-) wire to (2). When using a local indicator the minimum power supply must be **21 Vdc**.

4.2 **HAZARDOUS AREA:**

The SERIES 8000 and SERIES 8000-SAN can be certified for applications in hazardous areas.

In that case a *blue cable gland* will be used. When the transmitter is used in such areas, use a certified power supply, from 17-28 Vdc. Installation of this device has to be carried out by a certified and qualified mechanic / installer.

CERTIFICATION:

CE 0344 KEMA 03ATEX1219 X II 1 G EEx ia IIC T4:

$-20^{\circ} C < T_{amb} < 70^{\circ} C$ $U = 28 V$ $I_i = 110 mA$ $C_i = 7,5 nF$ $L_i = 73 \mu H$ $P_i = 0,9 W$

The X in the certificate number refers to a special condition only applicable for our submersible level transmitter "HYDROBAR" –cable and –FR. See for this conditions the ATEX-certificate.

4.3 **TRACEABILITY YEAR OF MANUFACTURING:**

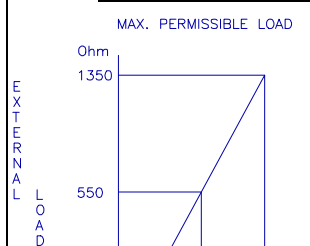
The year of manufacturing of the transmitter can be traced as follows: take the first two numbers from the serial number that is engraved in the transmitter and add 1908.

For example: if the serial number is 9302123. The year of manufacturing is $1908 + 93 = 2001$.

4.4 **CE-rules:**

All our transmitters are manufactured according to the CE-rules. All transmitters are standard equipped with RFI filters. The influence on Radio Frequency Interference between 10 MHz to 10 GHz is neglectable.

4.5 **EXTERNAL LOAD:**



The maximum permissible load (R_i max.) in case of 24 Vdc is 550 Ω (Ohm).

By increasing the power supply, the external load can be increased to 1350 Ohm / 40 Vdc. (see figure left).

$$R_i \text{ max.} = \frac{\text{Power Supply} - 13 \text{ Vdc (min. power supply)}}{20 \text{ mA}}$$

PRECAUTIONS and WARNINGS:

- * **Check if the specifications of the transmitter meet the needs of the process conditions.**
- * **When the SERIES 8000 or 8000-SAN is used as a level transmitter, be aware of the place where the transmitter is mounted. Here are some advises:**
 1. **DO NOT mount a level transmitter in- or near filling or discharging pipes.**
 2. **In case of automatic cleaning systems or hand cleaning: never point the water jets on the diaphragm, take necessary steps to avoid this. Guarantee will not be granted.**
- * **When the SERIE 8000 or SERIES 8000-SAN is used as a pressure transmitter, be aware of the following points:**
 1. **Rapid closing valves in combination with high flow velocity will cause water hammer(spikes) and can distroy the transmitter. DO NOT mount a transmitter near such valves, always a few pipe bends away up or down stream (avoid suction).**
 2. **Install a pressure transmitter a few pipe bends away from pumps, as well on the suction or pressure side of the pump.**
- * **WELDING ADVISEMENT:**
When using the SERIES 8000 or 8000-SAN code "W" the welding advisements on page 3 must be followed exactly. This is very important to prevent distortion of the weld-on nipples. It also prevents the screw thread from the SERIES 8000-SAN (M56 x 1,25) from not get deformed.
- * **The diaphragm of the transmitter is protected with a special protection cap. Protect the diaphragm until installation takes place, to prevent damaging of the diaphragm.**
- * **As soon as the wiring is brought inside through the PG9 cable gland and connected to the terminal board, make sure the cable gland is tightly fixed, so that moisture cannot enter into the electronic housing.**
- * **NEVER unscrew the venting(3), because it is especially designed to prevent moisture from entering into the electronic housing. If the ambient conditions are very wet, we advise to use a venting through the cable. A special vented cable can be delivered on request.**
- * **Avoid high pressure water-jets pointed at the venting.**
- * **Turn the cover (1) hand-tight, so that moisture cannot enter into the electronic housing.**
- * **WARRANTY: The warranty is 1 year from purchase date.
Klay Instruments B.V. assumes no liability for consequential damage of any kind due to use or missuse of the SERIES 8000 or SERIES 8000-SAN. Warranty will be given, to be decided by the manufacturer. Transmitter must be shipped prepaid to the factory on manufacturer's authorization.**
- **NOTE: Klay Instruments B.V. reserves the right to change its specifications at any time, without notice. Klay Instruments B.V. is not an expert in the customers's process (technical field) and therefore does not warrant the suitability of its product for the application selected by the customer.**

 **KLAY INSTRUMENTS B.V.**

Nijverheidsweg 5
P.O. Box 13

7991 CZ Dwingeloo
7990 AA Dwingeloo The Netherlands

TEL.: (+ 31) 521-591550
FAX.: (+ 31) 521-592046

EC-DECLARATION OF CONFORMITY

Klay Instruments B.V.

Nijverheidsweg 5, 7991 CZ Dwingeloo, The Netherlands

Certify that the equipment intended for use in potentially explosive atmospheres, only new products, indicated here after:

Electronic Pressure- and Level Transmitters
Series 8000-SAN, 8000, CER-8000
Hydrobar-Cable, Hydrobar-EXTD, Hydrobar-FR

Are in accordance with:

- directive 94/9/EC of 23 march 1994 (equipment and protective systems intended for use in potentially explosive atmospheres).
- Directive 89/336/EEC of 03 may 1989 (Electro Magnetic Compatibility).
- Harmonized standards:
 - EN 50014: 1997 (General rules)
 - EN 50020: 2002 (Intrinsic safety "i")
 - EN 50284: 1999 (Group II cat. 1G requirements)
 - IEC 61000-6-2: 2001 (EMC, Immunity in industrial location)
 - IEC 61000-6-3: 2001 (EMC, Emission in industrial location)
 - IEC 61000-6-4: 2001 (EMC, Emission in industrial location)
 - NEN-EN 13980: 2002 (Potentially explosive atmospheres – Application of quality systems)

- The type (protection mode "ia") which has been the subject of;

EC-type Examination Certificate Numbers:

KEMA 03 ATEX1219 X

delivered by the KEMA, Utrechtseweg 310, 6812 AR Arnhem, The Netherlands, notified body Nr. 0344, Manufacturing plant in Dwingeloo which has been the subject of;

Production Quality Assurance Notification Nr.:

KEMA 06 ATEX Q0188

delivered by the KEMA, Utrechtseweg 310, 6812 AR Arnhem, The Netherlands, notified body Nr. 0344

- Audit report nr: 2094306-QUA/Ex issued 27 October 2006

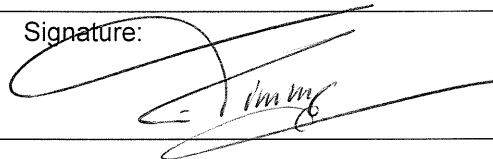
Date: November 1st 2006

E. Timmer

Managing Director

Klay Instruments B.V.

Signature:



The marking of the equipment is as follows:

II 1G EEx ia IIC T4

- "II" means that the equipment has been built for use in surface industries (and not in mines endangered by firedamp).
- "1" equipment for use in Zone 0 (if G)
- "G" equipment for use with gas, vapours or mists
- "EEx" equipment in compliance with European standards for explosive atmospheres
- "ia" equipment in compliance with specific building rules for intrinsically safe equipment
- "C" equipment for use with gas of subdivision C
- "T4" equipment whose surface temperature does not exceed 135°C when used in an ambient temperature < 70 °C.

Protection Grade, Series 8000-SAN, 8000, CER-8000, **IP 65**

Protection Grade, Series Hydrobar-cable, Hydrobar-EXTD, **IP 65**

The Hydrobar-FR and all other submersible parts from the Series Hydrobar are IP 68.

Furthermore, whatever the protection mode, only use cable glands with a protection degree of at least IP 66.

Be sure the cable diameter complies with the selected cable gland. Tighten the cable gland in a proper way.

Never forget to mount the covers of the electronics housings in a proper way.

For other technical details, refer to the instruction manuals of the series transmitters.



KLAY INSTRUMENTS B.V.

Nijverheidsweg 5

7991 CZ Dwingeloo

Tel.: +31 521 591550

The Netherlands

P.O. Box 13

7991 AA Dwingeloo

Fax.: +31 521 592046

e-mail: info@klay.nl



KLAY-INSTRUMENTS B.V.

INSTRUCTION MANUAL

PRESSURE-AND LEVEL TRANSMITTER

*** WARNING ***

Read this manual before working with the product. For personal and system safety, and for optimum product performance. Make sure you thoroughly understand the contents before installing, using or maintaining the SERIES 8000-RANGE-VALVE.

SERIES 8000-RANGE-VALVE

Made by:

KLAY INSTRUMENTS B.V.

Nijverheidsweg 5

7991 CZ Dwingeloo

P.O. Box 13

7990 AA Dwingeloo

THE NETHERLANDS

TEL.: +31 521 591550

FAX.: +31 521 592046

E-mail: info@klay.nl

CONTENTS

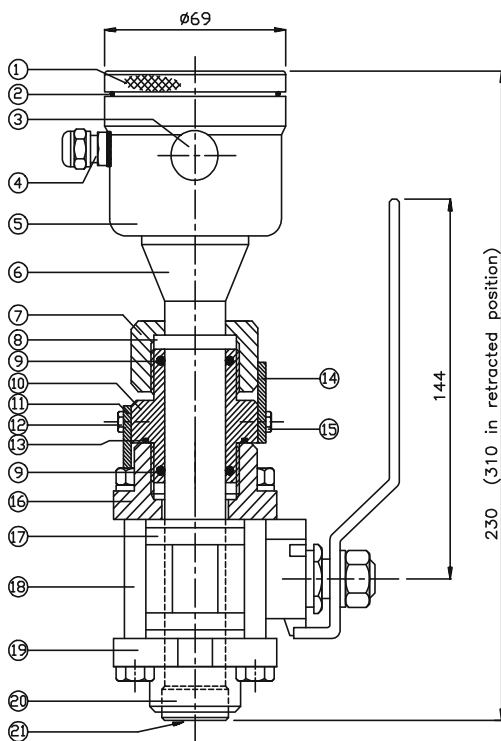
SECTION		PAGE
1	Description	2/6
1.1	Dimension Drawing	2/6
1.2	Before welding	2/6
2	INSTALLING TRANSMITTER	3/6
3	Mounting position effect	4/6
3.1	Calibratiion	4/6
3.2	Barometric reference	4/6

SECTION		PAGE
4	Wiring	5/6
4.1	Power supply / External Load	5/6
4.2	Local indicator	5/6
4.3	Hazardous area (Exi)	5/6
4.4	Traceability year of manufacturing	5/6
4.5	CE-rules	5/6
5	Precautions and Warnings	6/6
	Attachment EC-Declaration of Conformity	

1. DESCRIPTION:

De Series 8000-RANGE-VALVE is a **unique** combination of the series 8000 and ball Valve. The Series 8000-RANGE-VALVE is specially designed for the pulp- and paper industry or similar, where clogging is a problem. The very compact construction of the series 8000-RANGE-VALVE permits flush installation with the tank- or pipewall. The transmitter part can be removed without shutting down the process (for example: during clæning or maintaining activities). The diaphragm (21) is flush with the tank/pipe when the transmitter is pushed trough the valve and locked in its measuring position. All wetted parts are made of SS 316 (AISI).

1.1 DIMENSIONAL DRAWING:



PARTS DESCRIPTION (1")

PARTS DESCRIPTION (1")	MATERIAL
1. Cover	SS 304
2. O-Ring	EPDM
3. Venting	
4. PG9 Cablegland	
5. Elektronic Housing	SS 304
6. Extension	SS 316
7. Hexagon, nut SW 41	SS 304
8. Stop	SS 316
9. O-Ring (2x)	VITON
10. Nipple, SW 41 (1" BSP M 2x)	SS 316
11. Safety lock	SS 304
12. M4 Bolt (2x)	
13. O-Ring	VITON
14. Safety lock	SS 304
15. M4 Bolt(2x)	
16. Threaded valve joint(1"BSP F)	SS 316
17. Valve body	SS 316
18. M8 Bolt (4x)	SS 316
19. Weld spud (Ø 33,4 mm)	SS 316
20. Foot with diaphragm	SS 316
21. Diaphragm	SS 316

PARTS DESCRIPTION (1 1/2")

PARTS DESCRIPTION (1 1/2")	MATERIAL
7. Hexagon nut, SW 54	SS 304
10. Nipple, SW 57 (1 1/2" BSP M 2x)	SS 316
16. Threaded valve joint (1 1/2" BSP F)	SS 316
18. M 10 Valve bolt (4x)	SS 316
19. Welded spud (outside Ø 48,5 mm)	SS 316

1.2 BEFORE WELDING:

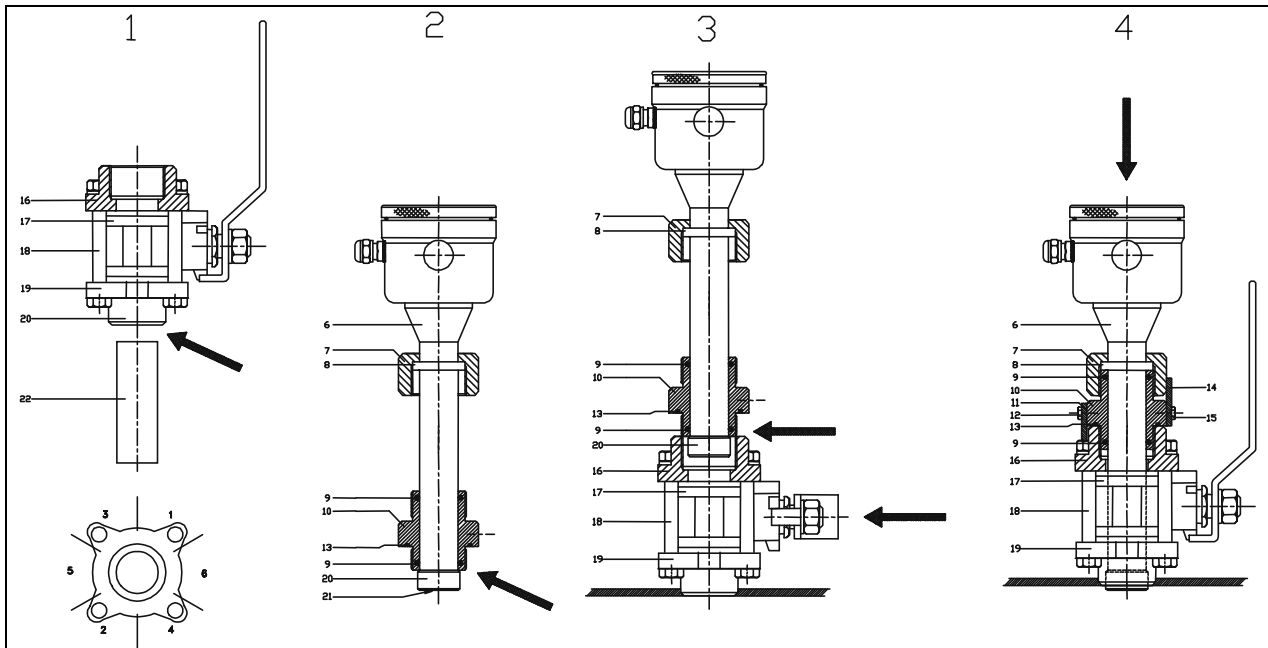
1. Unlock the safety lock (14).
2. Unscrew nut (7)
3. Retract transmitter until it does not want any further
4. Unlock the safety lock(11).
5. Unscrew nut (10) from threaded valve joint (16).
6. Retract transmitter from valve
7. Protect diaphragm (21) very carefully

INSTALLING TRANSMITTER:

For welding and installing the 8000-RANGE-VALVE read the next page (3/6) very carefully and folow exactly the instructions.

WARNING

BEFORE OPENING THE VALVE, MAKE SURE THAT THE TRANSMITTER IS LOCKED.



Warning:

Improper installation may result in weld spud distortion

A. Installation weld on nipple (figure 1):

1. Remove the weld spud (19) from the valve by unscrewing the four bolts (18).
2. Cut a hole in the process vessel/pipe to accept the weld spud. The hole should produce a tight fit when coupled with the weld spud.
3. Prepare the vessel hole beveling the edge to accept filler material.
4. Position the weld spud in the vessel hole and tack six places. The weld sequence is shown in figure 1.

WARNING

Excessive heat will distort the weld spud (19). Weld in sections as shown in Figure 1. allow adequate cooling between passes. To reduce the chances of distortion to the weld spud, use a heat sink (22).

B. Installation Valve

1. Mount valve on the weld spud by using the auxiliary tool to ensure the parts are in-line. Use silicone grease.
2. Tighten the valve bolts (18) (4x)
3. Remove the auxiliary tool and make sure the valve and be closed and opened easily
4. Make sure valve is **CLOSED**.

Warning: DO NOT DAMAGE THE DIAPHRAGM.

C. Installation transmitter (figure 2)

1. Remove the nipple (10) to the bottom of the transmitter part as shown in figure 2. Use silicone oil or grease.
2. Make sure the O-ring (13) is properly located.

D. Figure 3

1. Make sure to correctly locate the O-ring (13) into the nipple.
2. Position the transmitter into the threaded valve joint and begin engaging the threads. The transmitter can be rotated prior to seating enabling the user to optimize access to calibration adjustments, cable entry and local indicator.
3. Tighten the nipple (10).t.
4. Lock the nipple (10) to the threaded valve joint (16) by means of the safety lock (11) and two M4 bolts(12).
5. Valve must be opened (90°) **VERY** slowly.

E. Figure 4

1. Transmitter must be pushed through valve until hexagon nut (7) reaches the nipple (10).
2. Begin engaging the threads until stop (8) reaches nipple (10).
3. Tighten hexagon nut (7).
4. Lock the nut (7) to the nipple (10) by means of the safety lock (14) and two M4 bolts (15)

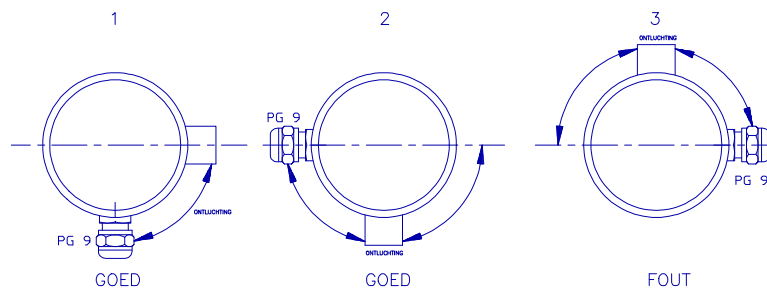
2 **INSTALLING TRANSMITTER**

For welding and installing the Series 8000-RANGE-VALVE the instructions on the previous page (3/6) must be followed exactly. This is extremely important to ensure a good working of the system.

WARNING:

**BEFORE OPENING THE VALVE, MAKE SURE THE TRANSMITTER IS LOCKED.
BE SURE THE VALVE IS CLOSED WHEN HE TRANSMITTER IS RETRACTED FROM VALVE.
THIS IS EXTREMELY IMPORTANT OTHERWISE THE TRANSMITTER WILL PUSH OUT OF
THE PROCESS.**

3 **MOUNTING POSITION / EFFECT:**



When the transmitter is mounted horizontal, the venting **MUST** be pointed horizontal to downwards. See figure left.

1=Right (=Prefered position)
2=Right

All other mounting positions are **NOT ALLOWED.**

3= Wrong

MOUNTING POSITION / EFFECT:

The transmitters are calibrated in horizontal position.

If the transmitter is mounted vertical (up or down), there will be a zero shift.

If the transmitter si mounted up there ia a zero shift (<4mA). If the transmitter is mounted down a zero there is a zero shift (>4mA).

After installation of the transmitter the zero must be set at 4mA with the zero potentiometer.

DO NOT change the span.

3.1 **CALIBRATION:**

All transmitters are fully calibrated at the factory, to conditions stipulated in users order. When the buyer has not requested calibration, the transmitter will be calibrated at the lowest span.

For wiring connection see next page.

The calibration sequence is as follows:

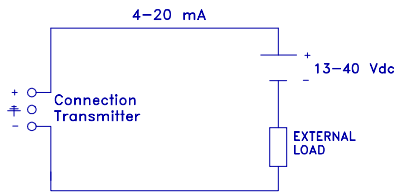
1. The output of the transmitter must be set at 4mA (Zero potentiometer).
2. Airpressure in accordance with the process pressure must be put on the testnipple.
3. The output of the transmitter must be set at 20mA (Span-potentiometer).
4. Remove the airpressure.
5. Check if the output of the transmitter is 4mA (otherwise repeat steps 1 till 4).
6. Install transmitter (see above).
7. The output must be set at 4mA (depenable of mounting position)

3.2 **BAROMETRIC REFERENCE:**

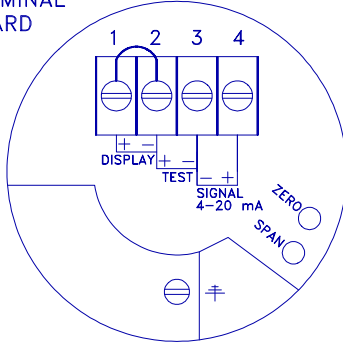
The series 8000-RANGE-VALVE is a basic so called "relative transmitter", which means that barometric changes will not affect the zero (4mA). The venting hole (3) is placed at the side of the electronic housing and is the barometric reference to atmospheric.

The venting hole must kept clean.

4 **WIRING:**



TERMINAL BOARD



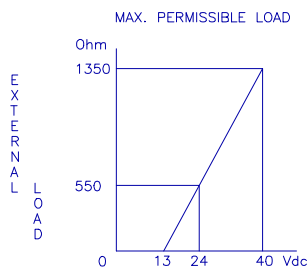
The connector, and **zero / span** potentiometers are under the cover. Testnipples for calibration of the SERIES 8000-RANGE-VALVE are available on request.

In most circumstances the load should be placed in the negative leg of the 2-wire loop, although it is not necessary.

The figure left shows the wiring connection of the transmitter. The 2-wires must be connected to connectors 3 (-) and 4 (+) of the terminal board.

The signal wiring must be shielded and twisted pair yield the best results. **DO NOT** run signal wiring in open trays with power wiring, or near "heavy" electrical equipment (E.g. Frequency controllers or heavy pumps). Shielding must always be connected at the side of the power supply. The transmitter ground (internal or external) must **NOT** be grounded when the mounting position is already grounded. **This is extremely important to prevent an "earth loop"**. Care must be taken to assure that the polarity of the power supply is correct, a reversal of wiring polarity will not damage the transmitter, but it will not function until the wiring is connected correctly.

4.1 **EXTERNAL LOAD:**



The maximum permissible load ($R_{i \text{ max.}}$) in case of 24 Vdc is 550 Ω (Ohm).

By increasing the power supply, the external load can be increased to 1350 Ohm / 40 Vdc. (see figure left).

$$R_{i \text{ max.}} = \frac{\text{Power Supply} - 13 \text{ Vdc (min. power supply)}}{20 \text{ mA}}$$

4.2 **DIGITAL LOCAL INDICATOR:**

The local indicator displays a digital value that is proportional to the pressure measured by the transmitter. The full scale point may be set to any value between 0000 and 1999. The local indicator can be mounted afterwards. Remove the bridge which is placed between connector (1) and (2). Connect the red (+) wire to (1) and the black (-) wire to (2). When using a local indicator the minimum power supply must be **21 Vdc**.

4.3 **HAZARDOUS AREA:**

The SERIES 8000, 8000-VALVE-RANGE, and SERIES 8000-SAN can be certified for applications in hazardous areas.

In that case a *blue cable gland* will be used. When the transmitter is used in such areas, use a certified power supply, from 17-28 Vdc. Installation of this device has to be carried out by a certified and qualified mechanic / installer.

CERTIFICATION:

CE 0344 KEMA 03ATEX1219 X II 1 G EEx ia IIC T4:

$-20^{\circ} \text{C} < T_{\text{amb}} < 70^{\circ} \text{C}$ $U = 28 \text{ V}$ $I_i = 110 \text{ mA}$ $C_i = 7,5 \text{ nF}$ $L_i = 73 \mu\text{H}$ $P_i = 0,9 \text{ W}$

The X in the certificate number refers to a special condition only applicable for our submersible level transmitter "HYDROBAR" –cable and –FR. See for this conditions the ATEX-certificate.

4.4 **TRACEABILITY YEAR OF MANUFACTURING:**

The year of manufacturing of the transmitter can be traced as follows: take the first two numbers from the serial number that is engraved in the transmitter and add 1908.

For example: if the serial number is 9302123. The year of manufacturing is $1908 + 93 = 2001$.

4.5 **CE-rules:**

All our transmitters are manufactured according to the CE-rules. All transmitters are standard equipped with RFI filters. The influence on Radio Frequency Interference between 10 MHz to 10 GHz is neglectable.

5.

PRECAUTIONS and WARNINGS:

We herewith give a list of some precautions and warnings concerning the application and installation of the electronic pressure – and leveltransmitters, **SERIES-RANGE-VALVE**

- * **Check if the specifications of the transmitter meet the needs of the process conditions.**
- * **BE SURE THE VALVE IS CLOSED WHEN TRANSMITTER IS RETRACTED FROM VALVE**
- * **When the *SERIES 8000-RANGE-VALVE* is used as a level transmitter, be aware of the place where the transmitter is mounted. Here are some advises:**
 1. **DO NOT mount a level transmitter in- or near filling or discharging pipes.**
 2. **In case of automatic cleaning systems or hand cleaning: never point the water jets on the diaphragm, take necessary steps to avoid this. Guarantee will not be granted.**
- * **When the *SERIE 8000 –RANGE-VALVE* is used as a pressure transmitter, be aware of the following points:**
 1. **Rapid closing valves in combination with high flow velocity will cause water hammer(spikes) and can distroy the transmitter. DO NOT mount a transmitter near such valves, always a few pipe bends away up or down stream (avoid suction).**
 2. **Install a pressure transmitter a few pipe bends away from pumps, as well on the suction or pressure side of the pump.**
- * **WELDING ADVISEMENT:**
When using the *SERIES 8000-RANGE-VALVE* the welding advisements on page 3 must be followed exactly. This is very important to prevent distortion of the weld spud.
- * **The diaphragm of the *SERIES 8000-RANGE-VALVE* transmitter is protected with a special protection cap. Protect the diaphragm until installation takes place, to prevent damaging of the diaphragm.**
- * **As soon as the wiring is brought inside through the PG9 cable gland and connected to the terminal board, make sure the cable gland is tightly fixed, so that moisture cannot enter into the electronic housing.**
- * **NEVER unscrew the venting(3), because it is especially designed to prevent moisture from entering into the electronic housing. If the ambient conditions are very wet, we advise to use a venting through the cable. A special vented cable can be delivered on request.**
- * **Avoid high pressure water-jets pointed at the venting.**
- * **Turn the cover (1) hand-tight, so that moisture cannot enter into the electronic housing.**
- * **WARRANTY: The warranty is 1 year from purchase date.
Klay Instruments B.V. assumes no liability for consequential damage of any kind due to use or missuse of the *SERIES 8000-RANGE-VALVE*. Warranty will be given, to be decided by the manufacturer. Transmitter must be shipped prepaid to the factory on manufacturer's authorization.**
- * **NOTE: *Klay Instruments B.V.* reserves the right to change its specifications at any time, without notice. *Klay Instruments B.V.* is not an expert in the customers's process (technical field) and therefore does not warrant the suitability of its product for the application selected by the customer.**

KLAY INSTRUMENTS B.V.

Nijverheidsweg 5
P.O. Box 13

7991 CZ Dwingeloo
7990 AA Dwingeloo

The Netherlands

TEL.: 0521-591550
FAX.: 0521-592046

E-mail: info@klay

EC-DECLARATION OF CONFORMITY

Klay Instruments B.V.

Nijverheidsweg 5, 7991 CZ Dwingeloo, The Netherlands

Certify that the equipment intended for use in potentially explosive atmospheres, only new products, indicated here after:

Electronic Pressure- and Level Transmitters
Series 8000-SAN, 8000, CER-8000
Hydrobar-Cable, Hydrobar-EXTD, Hydrobar-FR

Are in accordance with:

- directive 94/9/EC of 23 march 1994 (equipment and protective systems intended for use in potentially explosive atmospheres).
- Directive 89/336/EEC of 03 may 1989 (Electro Magnetic Compatibility).
- Harmonized standards:
 - EN 50014: 1997 (General rules)
 - EN 50020: 2002 (Intrinsic safety "i")
 - EN 50284: 1999 (Group II cat. 1G requirements)
 - IEC 61000-6-2: 2001 (EMC, Immunity in industrial location)
 - IEC 61000-6-3: 2001 (EMC, Emission in industrial location)
 - IEC 61000-6-4: 2001 (EMC, Emission in industrial location)
 - NEN-EN 13980: 2002 (Potentially explosive atmospheres – Application of quality systems)

- The type (protection mode "ia") which has been the subject of;

EC-type Examination Certificate Numbers:

KEMA 03 ATEX1219 X

delivered by the KEMA, Utrechtseweg 310, 6812 AR Arnhem, The Netherlands, notified body Nr. 0344, Manufacturing plant in Dwingeloo which has been the subject of;

Production Quality Assurance Notification Nr.:

KEMA 06 ATEX Q0188

delivered by the KEMA, Utrechtseweg 310, 6812 AR Arnhem, The Netherlands, notified body Nr. 0344

- Audit report nr: 2094306-QUA/Ex issued 27 October 2006

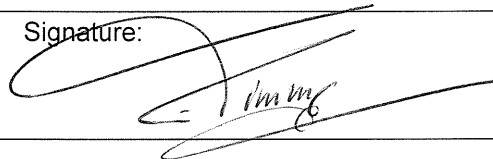
Date: November 1st 2006

E. Timmer

Managing Director

Klay Instruments B.V.

Signature:



The marking of the equipment is as follows:

II 1G EEx ia IIC T4

- "II" means that the equipment has been built for use in surface industries (and not in mines endangered by firedamp).
- "1" equipment for use in Zone 0 (if G)
- "G" equipment for use with gas, vapours or mists
- "EEx" equipment in compliance with European standards for explosive atmospheres
- "ia" equipment in compliance with specific building rules for intrinsically safe equipment
- "C" equipment for use with gas of subdivision C
- "T4" equipment whose surface temperature does not exceed 135°C when used in an ambient temperature < 70 °C.

Protection Grade, Series 8000-SAN, 8000, CER-8000, **IP 65**

Protection Grade, Series Hydrobar-cable, Hydrobar-EXTD, **IP 65**

The Hydrobar-FR and all other submersible parts from the Series Hydrobar are IP 68.

Furthermore, whatever the protection mode, only use cable glands with a protection degree of at least IP 66.

Be sure the cable diameter complies with the selected cable gland. Tighten the cable gland in a proper way.

Never forget to mount the covers of the electronics housings in a proper way.

For other technical details, refer to the instruction manuals of the series transmitters.



KLAY INSTRUMENTS B.V.

Nijverheidsweg 5

7991 CZ Dwingeloo

Tel.: +31 521 591550

The Netherlands

P.O. Box 13

7991 AA Dwingeloo

Fax.: +31 521 592046

e-mail: info@klay.nl